

M:\Documentation\Website Downloads\3. Timber Frames\1. Vertical\1. Double Hung\VS 4P6 FSuSdF T (H) - 4 pane 6mm sashless double hung in timber frames FSuSdF.dwg


Table of Contents

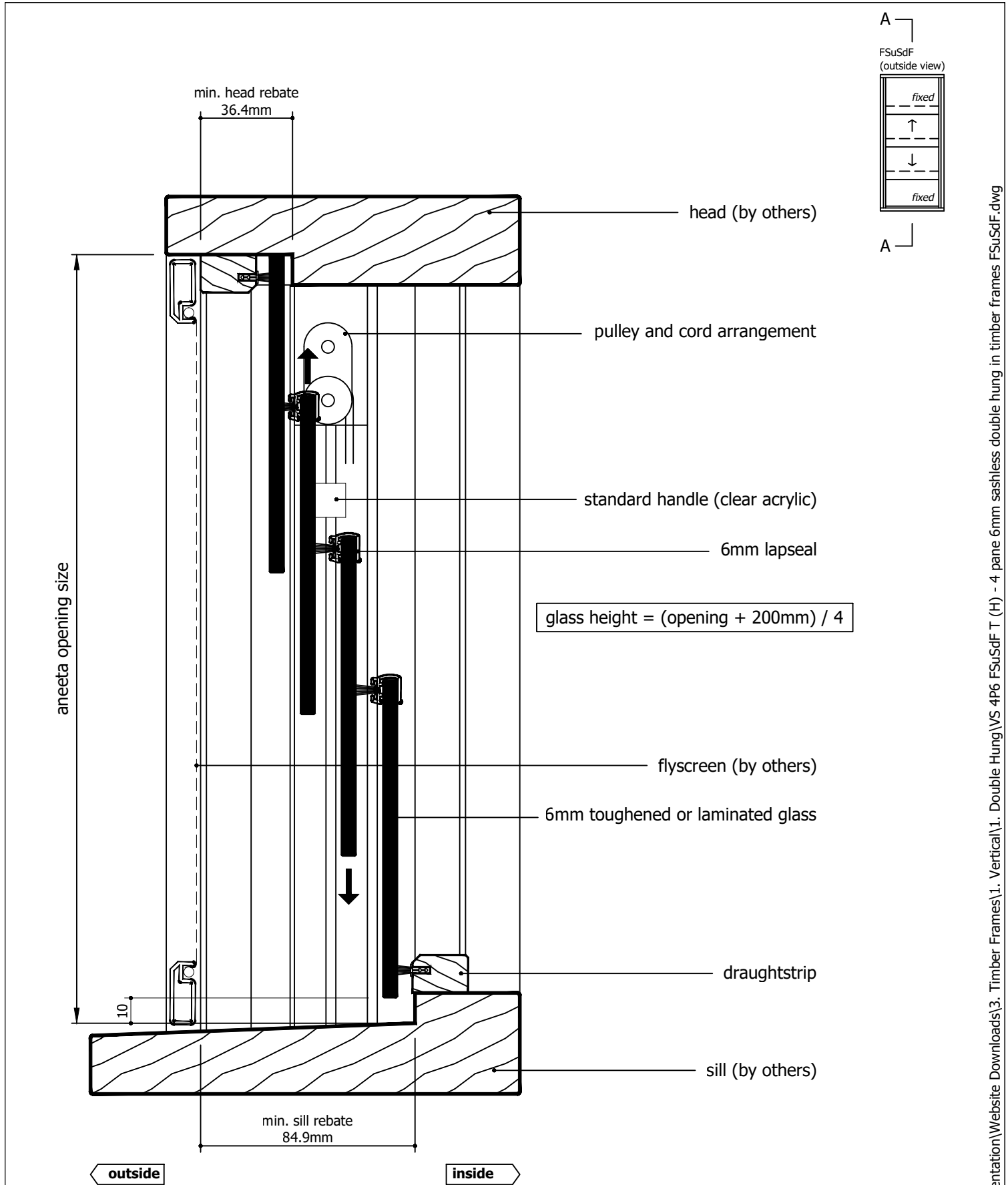
Page	View	Cover Type	Sill Type
2	Vertical Section	Timber covers	Draughtstrip
3	Vertical Section	Timber covers	Draughtstrip x 2
4	Vertical Section	Timber covers	VS Sill
5	Vertical Section	Timber covers	VS HP Sill
6	Vertical Section	Timber covers	None
7	Vertical Section	Timber covers	Flapseal
8	Horizontal Section	Timber covers	-
9	Vertical Section	Aluminium covers outside, timber covers inside	Draughtstrip
10	Vertical Section	Aluminium covers outside, timber covers inside	Draughtstrip x 2
11	Vertical Section	Aluminium covers outside, timber covers inside	VS Sill
12	Vertical Section	Aluminium covers outside, timber covers inside	VS HP Sill
13	Vertical Section	Aluminium covers outside, timber covers inside	None
14	Vertical Section	Aluminium covers outside, timber covers inside	Flapseal
15	Horizontal Section	Aluminium covers outside, timber covers inside	-
16	Vertical Section	Aluminium covers	Draughtstrip
17	Vertical Section	Aluminium covers	Draughtstrip x 2
18	Vertical Section	Aluminium covers	VS Sill
19	Vertical Section	Aluminium covers	VS HP Sill
20	Vertical Section	Aluminium covers	None
21	Vertical Section	Aluminium covers	Flapseal
22	Horizontal Section	Aluminium covers	-

Rev	Description	Approved By	Date
H	Delete P008 and replace with P229 - VS Sill	DF	26/8/2025
G	VS 300Pa/800Pa sill adaptor changed to VS Sill/VS HP Sill	DF	Oct2024
F	Add various sill options	SE	Jun2024
E	Update with new template, delete continuous handle	SE	Jan2024
D	New lock and pins	SE	Sep2020
C	Updated sill, lock, pulley height, drawing layout	RL	Jun2013
B	Adjusted glass heights	UF	Nov2010



IF IN DOUBT ASK - DO NOT SCALE DRAWING


<div>Proprietary and confidential</div> <div>The information contained in this drawing is the sole property of Aneeta Australia. Any reproduction in part or as a whole, without the written permission of Aneeta Australia is prohibited.</div>	Title: 4 pane 6mm sashless double hung in timber frames FSuSdF				<div> 949 Stud Road, Rowville VIC 3178, ABN 80 062 883 729</div>		Material: in Timber frames
							Finish: -
							Die/Part: -
							Dwg No: VS 4P6 FSuSdF T
	Drwn: UF	Chk: -	Date: Jan2010	Scale:	Sheet 1 of 22	Revision: H	



Rev	Description	Approved	
		By	Date
H	Delete P008 and replace with P229 - VS Sill	DF	26/8/2025
G	VS 300Pa/800Pa sill adaptor changed to VS Sill/VS HP Sill	DF	Oct2024
F	Add various sill options	SE	Jun2024
E	Update with new template, delete continuous handle	SE	Jan2024
D	New lock and pins	SE	Sep2020
C	Updated sill, lock, pulley height, drawing layout	RL	Jun2013
B	Adjusted glass heights	UF	Nov2010

Proprietary and confidential
The information contained in this drawing is the sole property of Aneeta Australia. Any reproduction in part or as a whole, without the written permission of Aneeta Australia is prohibited.

Title:
4 pane 6mm sashless double hung in timber frames FSuSdF with timber covers and draughtstrips at sill vertical section A-A


949 Stud Road, Rowville VIC 3178, ABN 80 062 883 729

Drwn: UF Chk: - Date: Jan2010 Scale: 1:20A4 Sheet 2 of 22 Revision: H

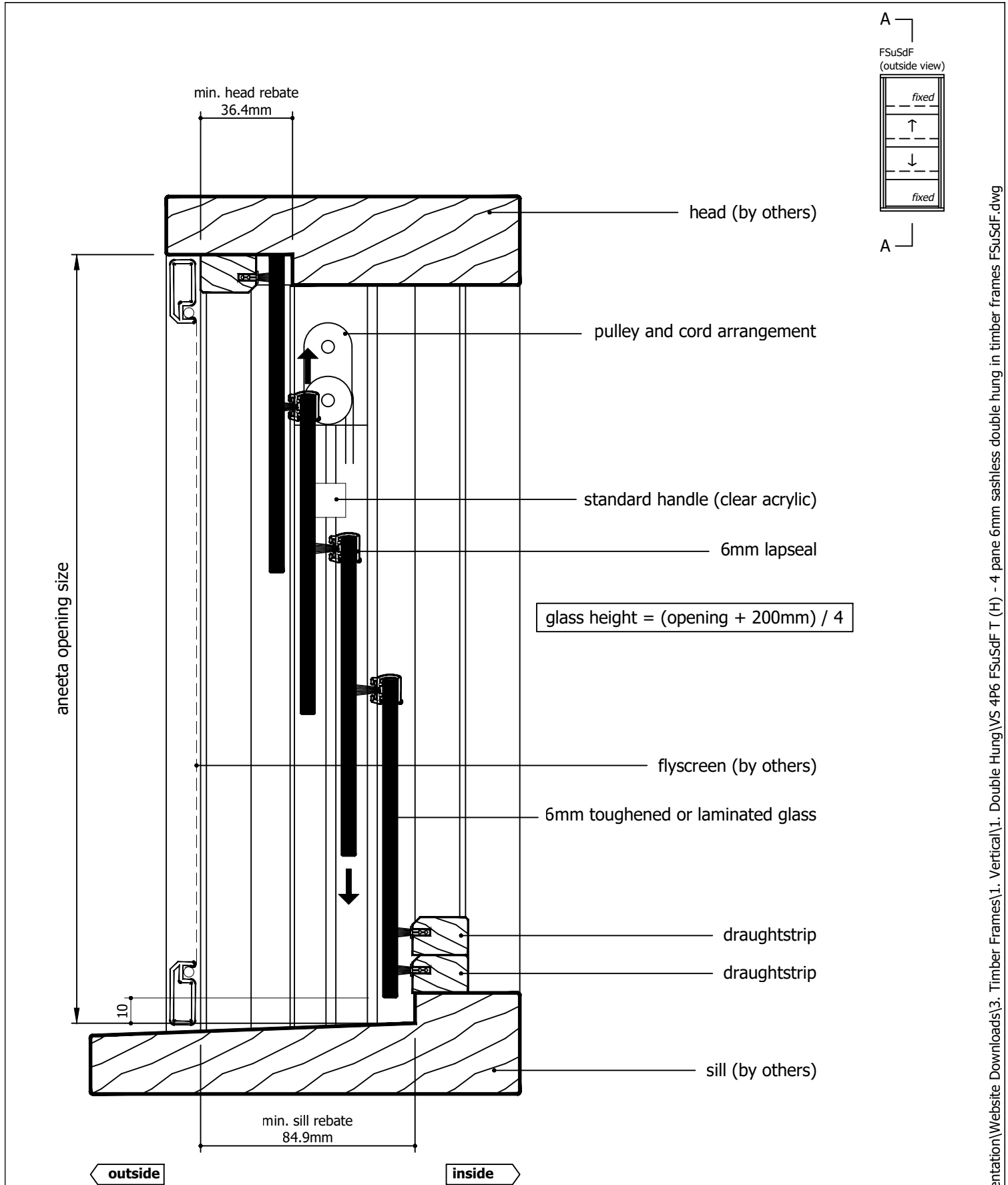
Material: in Timber frames

Finish: -


Die/Part: -

Dwg No: VS 4P6 FSuSdF T

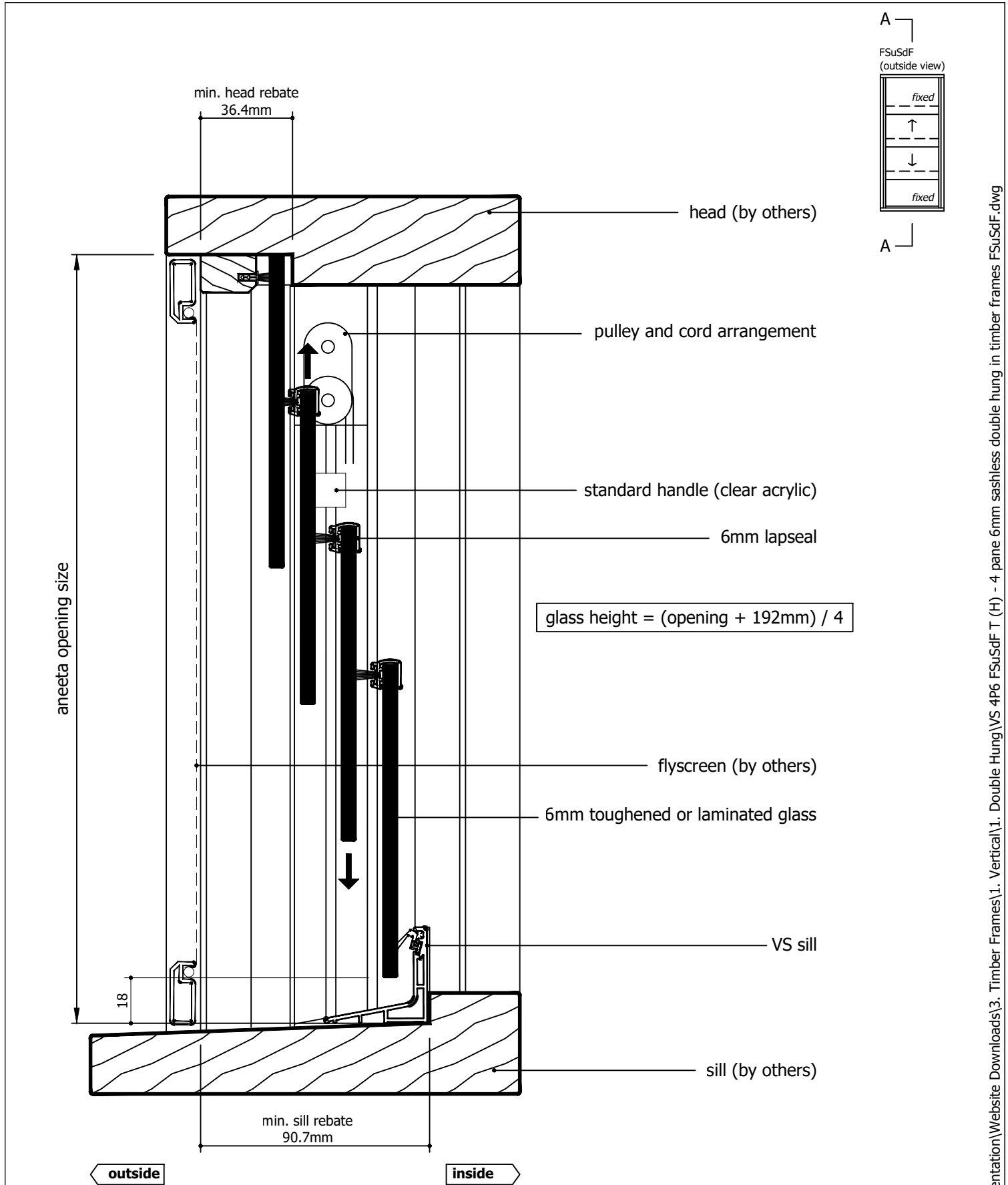
M:\Documentation\Website Downloads\3. Timber Frames\1. Vertical\1. Double Hung\VS 4P6 FSuSdF T (H) - 4 pane 6mm sashless double hung in timber frames FSuSdF.dwg



Rev	Description	Approved	
		By	Date
H	Delete P008 and replace with P229 - VS Sill	DF	26/8/2025
G	VS 300Pa/800Pa sill adaptor changed to VS Sill/VS HP Sill	DF	Oct2024
F	Add various sill options	SE	Jun2024
E	Update with new template, delete continuous handle	SE	Jan2024
D	New lock and pins	SE	Sep2020
C	Updated sill, lock, pulley height, drawing layout	RL	Jun2013
B	Adjusted glass heights	UF	Nov2010

Proprietary and confidential The information contained in this drawing is the sole property of Aneeta Australia. Any reproduction in part or as a whole, without the written permission of Aneeta Australia is prohibited.	Title: 4 pane 6mm sashless double hung in timber frames FSuSdF with timber covers and 2 x draughtstrips at sill vertical section A-A		 949 Stud Road, Rowville VIC 3178, ABN 80 062 883 729		Material: in Timber frames	
					Finish: -	
					Die/Part: -	
					Dwg No: VS 4P6 FSuSdF T	
					Revision: H	
Drwn: UF		Chk: -	Date: Jan2010	Scale: 1:2@A4	Sheet 3 of 22	


M:\Documentation\Website Downloads\3. Timber Frames\1. Vertical\1. Double Hung\VS 4P6 FSuSdF T (H) - 4 pane 6mm sashless double hung in timber frames FSuSdF.dwg



Rev	Description	Approved	
		By	Date
H	Delete P008 and replace with P229 - VS Sill	DF	26/8/2025
G	VS 300Pa/800Pa sill adaptor changed to VS Sill/VS HP Sill	DF	Oct2024
F	Add various sill options	SE	Jun2024
E	Update with new template, delete continuous handle	SE	Jan2024
D	New lock and pins	SE	Sep2020
C	Updated sill, lock, pulley height, drawing layout	RL	Jun2013
B	Adjusted glass heights	UF	Nov2010

Proprietary and confidential
The information contained in this drawing is the sole property of Aneeta Australia. Any reproduction in part or as a whole, without the written permission of Aneeta Australia is prohibited.

Title:
4 pane 6mm sashless double hung in timber frames FSuSdF with timber covers and VS sill vertical section A-A


949 Stud Road, Rowville VIC 3178, ABN 80 062 883 729

Drwn: UF Chk: - Date: Jan2010 Scale: 1:20A4 Sheet 4 of 22 Revision: H

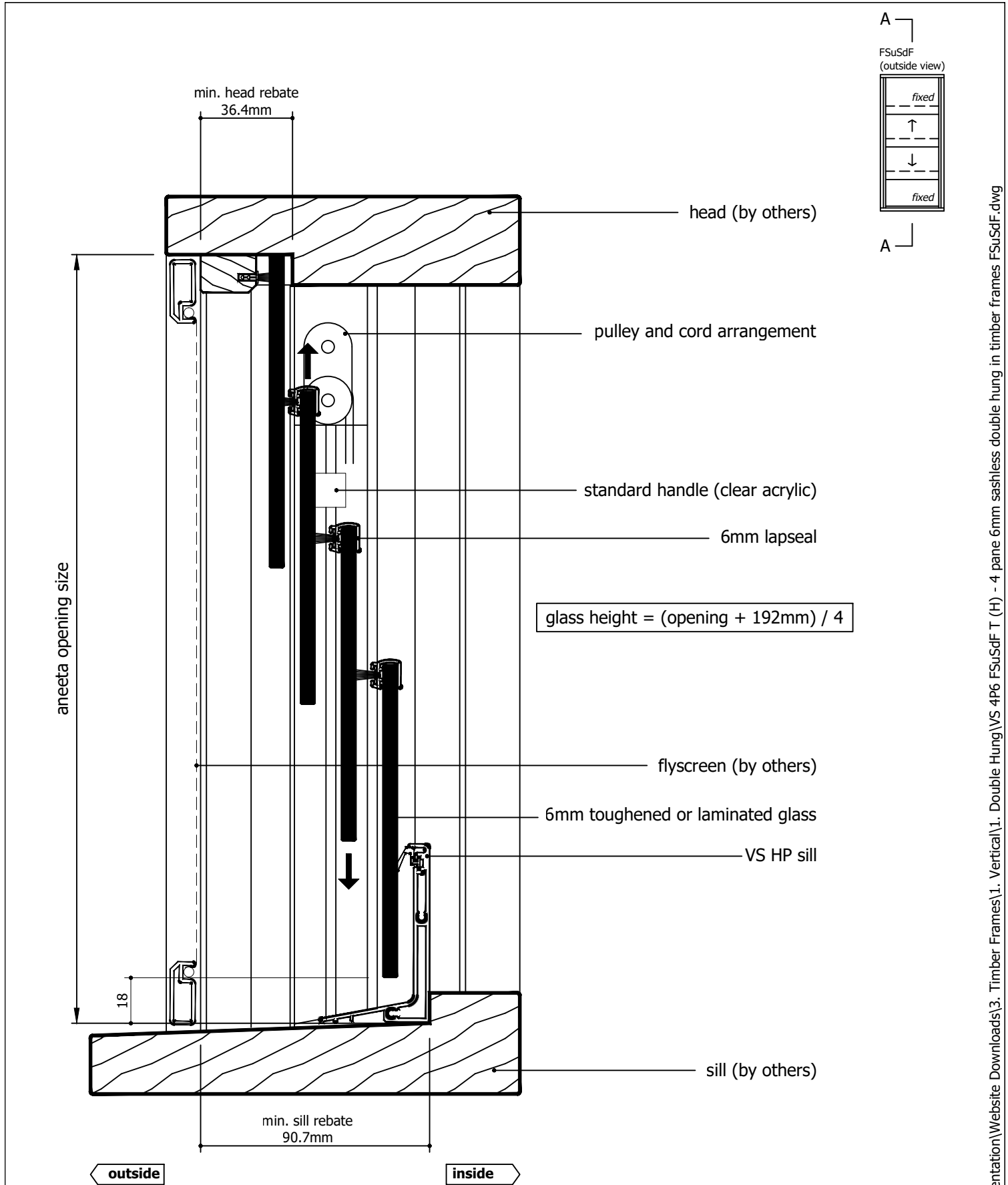
Material: in Timber frames

Finish: -

Die/Part: -

Dwg No: VS 4P6 FSuSdF T


M:\Documentation\Website Downloads\3. Timber Frames\1. Vertical\1. Double Hung\VS 4P6 FSuSdF T (H) - 4 pane 6mm sashless double hung in timber frames FSuSdF.dwg



Rev	Description	Approved	
		By	Date
H	Delete P008 and replace with P229 - VS Sill	DF	26/8/2025
G	VS 300Pa/800Pa sill adaptor changed to VS Sill/VS HP Sill	DF	Oct2024
F	Add various sill options	SE	Jun2024
E	Update with new template, delete continuous handle	SE	Jan2024
D	New lock and pins	SE	Sep2020
C	Updated sill, lock, pulley height, drawing layout	RL	Jun2013
B	Adjusted glass heights	UF	Nov2010

Proprietary and confidential
The information contained in this drawing is the sole property of Aneeta Australia. Any reproduction in part or as a whole, without the written permission of Aneeta Australia is prohibited.

Title:
4 pane 6mm sashless double hung in timber frames FSuSdF with timber covers and VS HP sill vertical section A-A


949 Stud Road, Rowville VIC 3178, ABN 80 062 883 729

Drwn: UF Chk: - Date: Jan2010 Scale: 1:20A4 Sheet 5 of 22 Revision: H

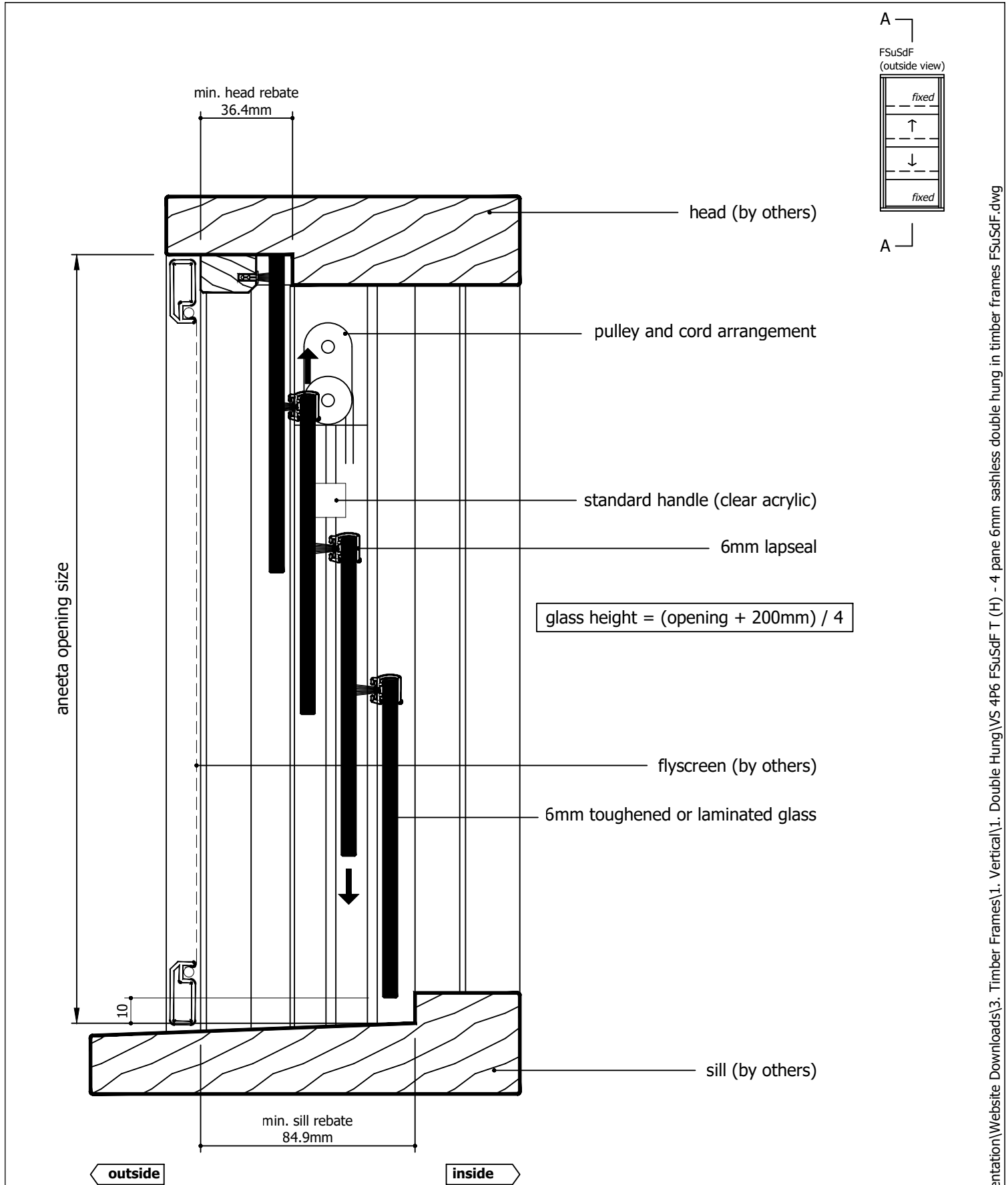
Material: in Timber frames

Finish: -


Die/Part: -

Dwg No: VS 4P6 FSuSdF T

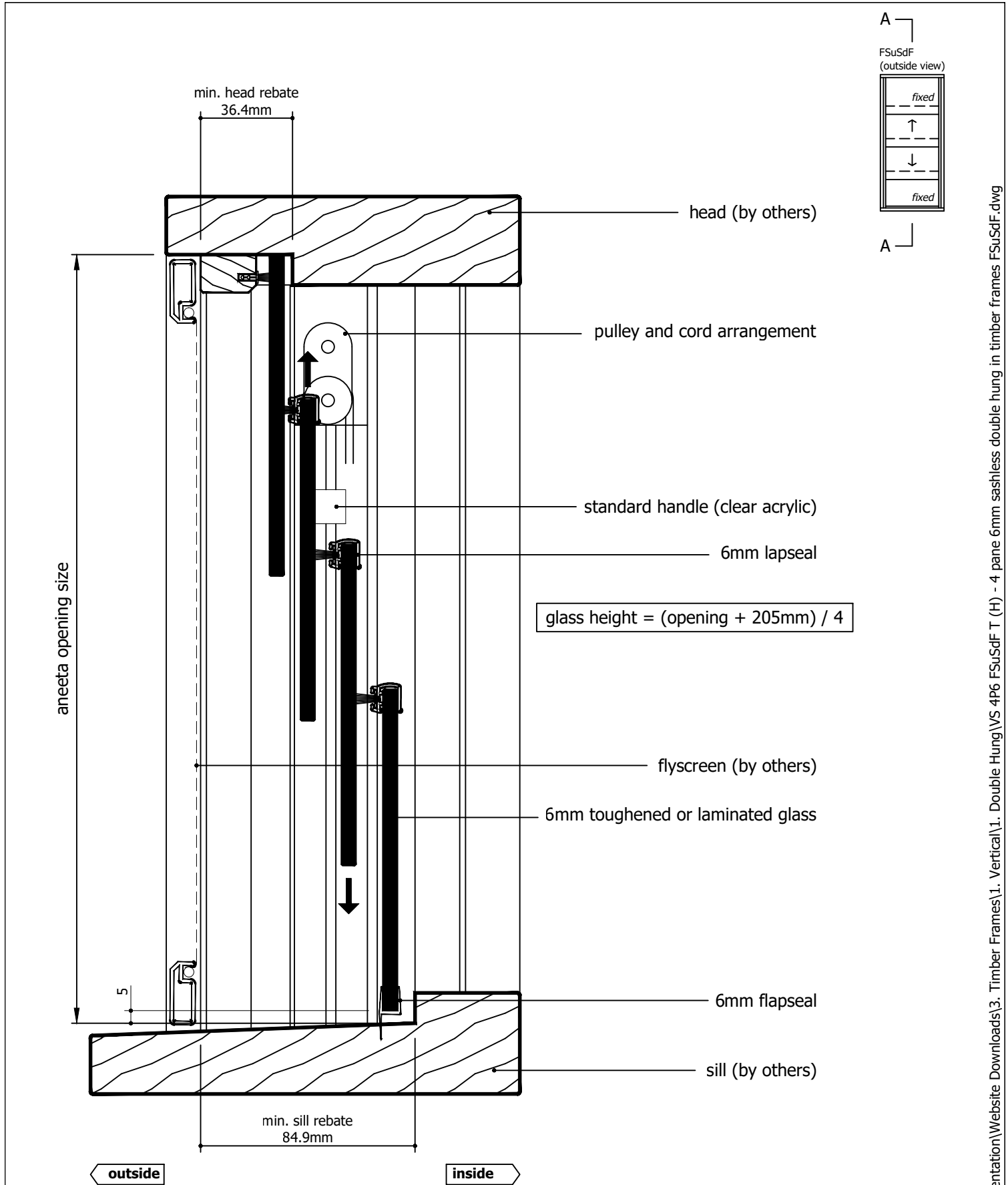
M:\Documentation\Website Downloads\3. Timber Frames\1. Vertical\1. Double Hung\VS 4P6 FSuSdF T (H) - 4 pane 6mm sashless double hung in timber frames FSuSdF.dwg



Rev	Description	Approved	
		By	Date
H	Delete P008 and replace with P229 - VS Sill	DF	26/8/2025
G	VS 300Pa/800Pa sill adaptor changed to VS Sill/VS HP Sill	DF	Oct2024
F	Add various sill options	SE	Jun2024
E	Update with new template, delete continuous handle	SE	Jan2024
D	New lock and pins	SE	Sep2020
C	Updated sill, lock, pulley height, drawing layout	RL	Jun2013
B	Adjusted glass heights	UF	Nov2010

Proprietary and confidential The information contained in this drawing is the sole property of Aneeta Australia. Any reproduction in part or as a whole, without the written permission of Aneeta Australia is prohibited.	Title: 4 pane 6mm sashless double hung in timber frames FSuSdF with timber covers and no sill adaptor vertical section A-A		 949 Stud Road, Rowville VIC 3178, ABN 80 062 883 729		Material:	in Timber frames
					Finish:	-
					Die/Part:	-
					Dwg No:	VS 4P6 FSuSdF T
					Drwn: UF	Chk: -
Date: Jan2010		Scale: 1:20 A4		Sheet 6 of 22		Revision: H


M:\Documentation\Website Downloads\3. Timber Frames\1. Vertical\1. Double Hung\VS 4P6 FSuSdF T (H) - 4 pane 6mm sashless double hung in timber frames FSuSdF.dwg



Rev	Description	Approved	
		By	Date
H	Delete P008 and replace with P229 - VS Sill	DF	26/8/2025
G	VS 300Pa/800Pa sill adaptor changed to VS Sill/VS HP Sill	DF	Oct2024
F	Add various sill options	SE	Jun2024
E	Update with new template, delete continuous handle	SE	Jan2024
D	New lock and pins	SE	Sep2020
C	Updated sill, lock, pulley height, drawing layout	RL	Jun2013
B	Adjusted glass heights	UF	Nov2010

Proprietary and confidential
The information contained in this drawing is the sole property of Aneeta Australia. Any reproduction in part or as a whole, without the written permission of Aneeta Australia is prohibited.

Title:
4 pane 6mm sashless double hung in timber frames FSuSdF with timber covers and 6mm flapseal at sill vertical section A-A


949 Stud Road, Rowville VIC 3178, ABN 80 062 883 729

Drwn: UF Chk: - Date: Jan2010 Scale: 1:20A4 Sheet 7 of 22 Revision: H

Material: in Timber frames

Finish: -

Die/Part: -

Dwg No: VS 4P6 FSuSdF T

M:\Documentation\Website Downloads\3. Timber Frames\1. Vertical\1. Double Hung\VS 4P6 FSuSdF T (H) - 4 pane 6mm sashless double hung in timber frames FSuSdF.dwg

glass width = opening - 40mm

aneeta opening size

flyscreen (optional by others)

tee

top pane

bottom pane

timber cover

6mm multipane tee

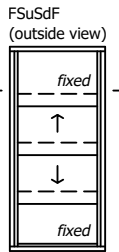
lock

jamb (by others)


outside

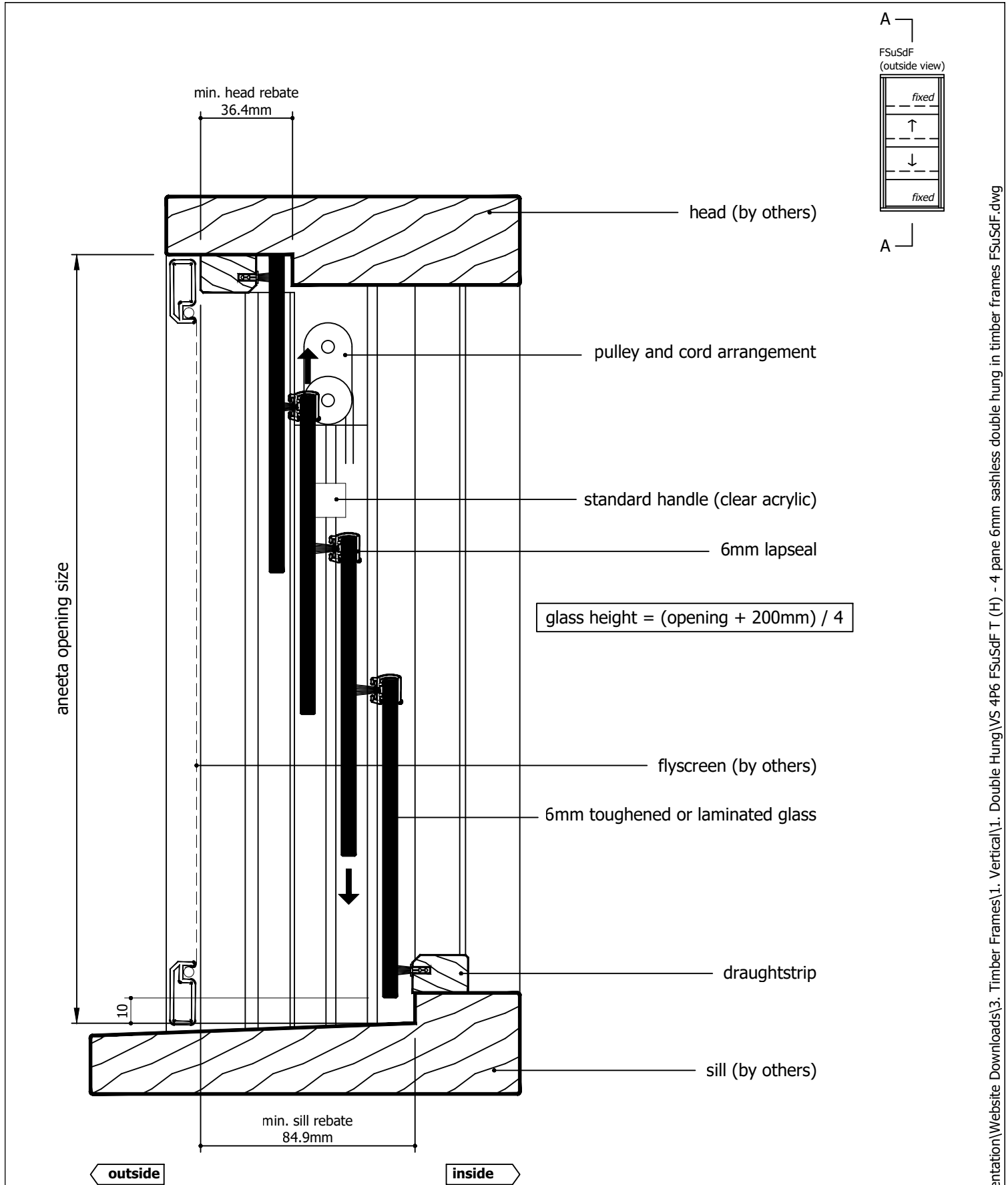
104.6

inside



Rev	Description	Approved By	Date
H	Delete P008 and replace with P229 - VS Sill	DF	26/8/2025
G	VS 300Pa/800Pa sill adaptor changed to VS Sill/VS HP Sill	DF	Oct2024
F	Add various sill options	SE	Jun2024
E	Update with new template, delete continuous handle	SE	Jan2024
D	New lock and pins	SE	Sep2020
C	Updated sill, lock, pulley height, drawing layout	RL	Jun2013
B	Adjusted glass heights	UF	Nov2010

<div>Proprietary and confidential</div> <div>The information contained in this drawing is the sole property of Aneeta Australia. Any reproduction in part or as a whole, without the written permission of Aneeta Australia is prohibited.</div>	Title: 4 pane 6mm sashless double hung in timber frames FSuSdF with timber covers				<div> 949 Stud Road, Rowville VIC 3178, ABN 80 062 883 729</div>		Material: in Timber frames
	horizontal section B-B						Finish: -
	Drwn: UF Chk: - Date: Jan2010 Scale: 1:1@A4 Sheet 8 of 22				Die/Part: -	Dwg No: VS 4P6 FSuSdF T	
	Revision: H						



Rev	Description	Approved	
		By	Date
H	Delete P008 and replace with P229 - VS Sill	DF	26/8/2025
G	VS 300Pa/800Pa sill adaptor changed to VS Sill/VS HP Sill	DF	Oct2024
F	Add various sill options	SE	Jun2024
E	Update with new template, delete continuous handle	SE	Jan2024
D	New lock and pins	SE	Sep2020
C	Updated sill, lock, pulley height, drawing layout	RL	Jun2013
B	Adjusted glass heights	UF	Nov2010

Proprietary and confidential
The information contained in this drawing is the sole property of Aneeta Australia. Any reproduction in part or as a whole, without the written permission of Aneeta Australia is prohibited.


Title:
4 pane 6mm sashless double hung in timber frames FSuSdF with aluminium covers outside, timber covers inside, and draughtstrips at sill vertical section A-A

Drwn: UF

Chk: -

Date: Jan2010

Scale: 1:20A4



949 Stud Road, Rowville VIC 3178, ABN 80 062 883 729

Material: in Timber frames

Finish: -

Die/Part: -

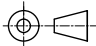
Dwg No: VS 4P6 FSuSdF T

Sheet 9 of 22

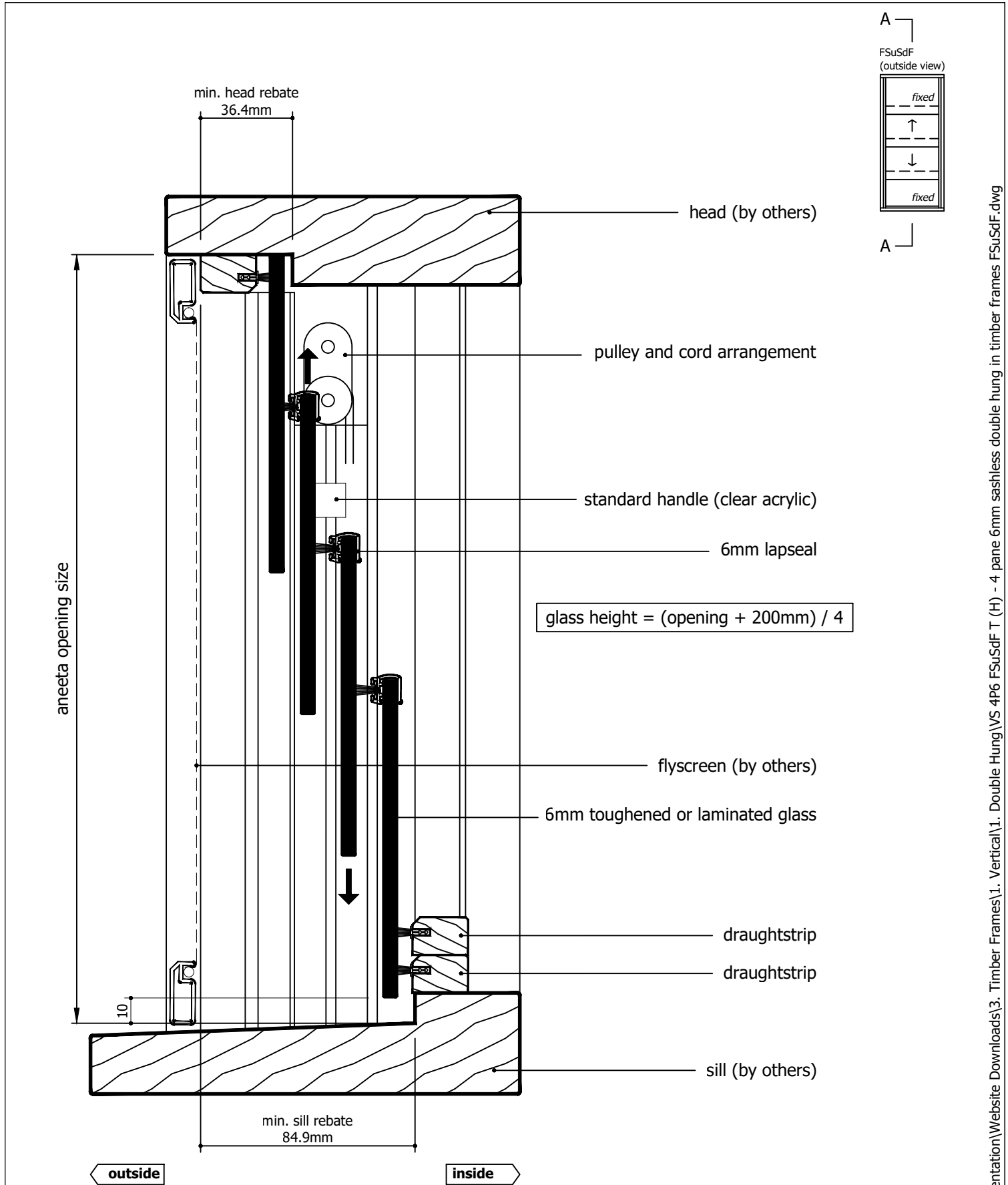
Revision: H

IF IN DOUBT ASK -

DO NOT SCALE DRAWING



M:\Documentation\Website Downloads\3. Timber Frames\1. Vertical\1. Double Hung\VS 4P6 FSuSdF T (H) - 4 pane 6mm sashless double hung in timber frames FSuSdF.dwg



Rev	Description	Approved	
		By	Date
H	Delete P008 and replace with P229 - VS Sill	DF	26/8/2025
G	VS 300Pa/800Pa sill adaptor changed to VS Sill/VS HP Sill	DF	Oct2024
F	Add various sill options	SE	Jun2024
E	Update with new template, delete continuous handle	SE	Jan2024
D	New lock and pins	SE	Sep2020
C	Updated sill, lock, pulley height, drawing layout	RL	Jun2013
B	Adjusted glass heights	UF	Nov2010

Proprietary and confidential
The information contained in this drawing is the sole property of Aneeta Australia. Any reproduction in part or as a whole, without the written permission of Aneeta Australia is prohibited.


Title:
4 pane 6mm sashless double hung in timber frames FSuSdF with aluminium covers outside, timber covers inside, and 2 x draughtstrips at sill vertical section A-A

Drwn: UF

Chk: -

Date: Jan2010

Scale: 1:20 A4



aneeta

949 Stud Road, Rowville VIC 3178, ABN 80 062 883 729

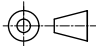
Material: in Timber frames

Finish: -

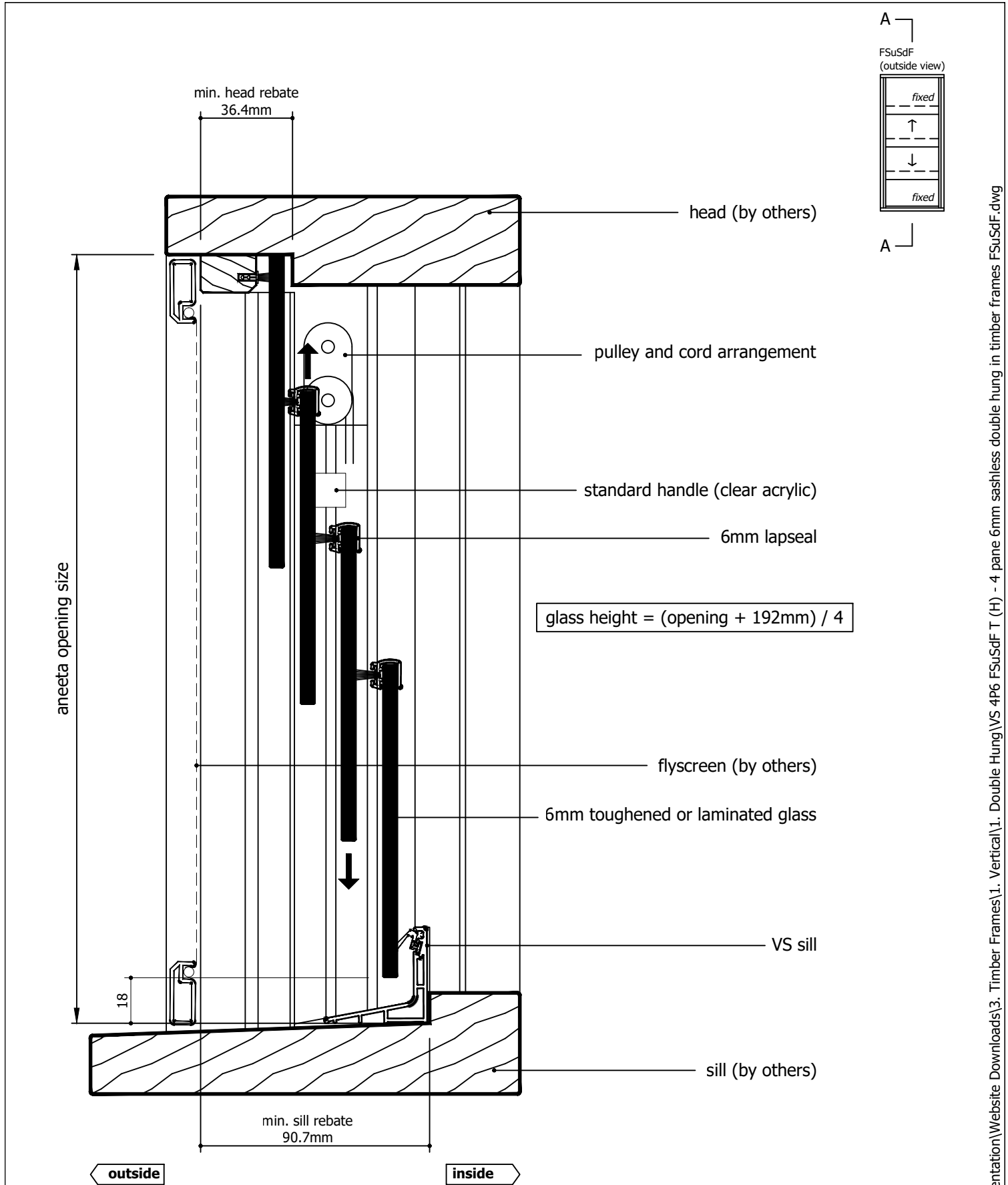
Die/Part: -

Dwg No: VS 4P6 FSuSdF T


IF IN DOUBT ASK - DO NOT SCALE DRAWING



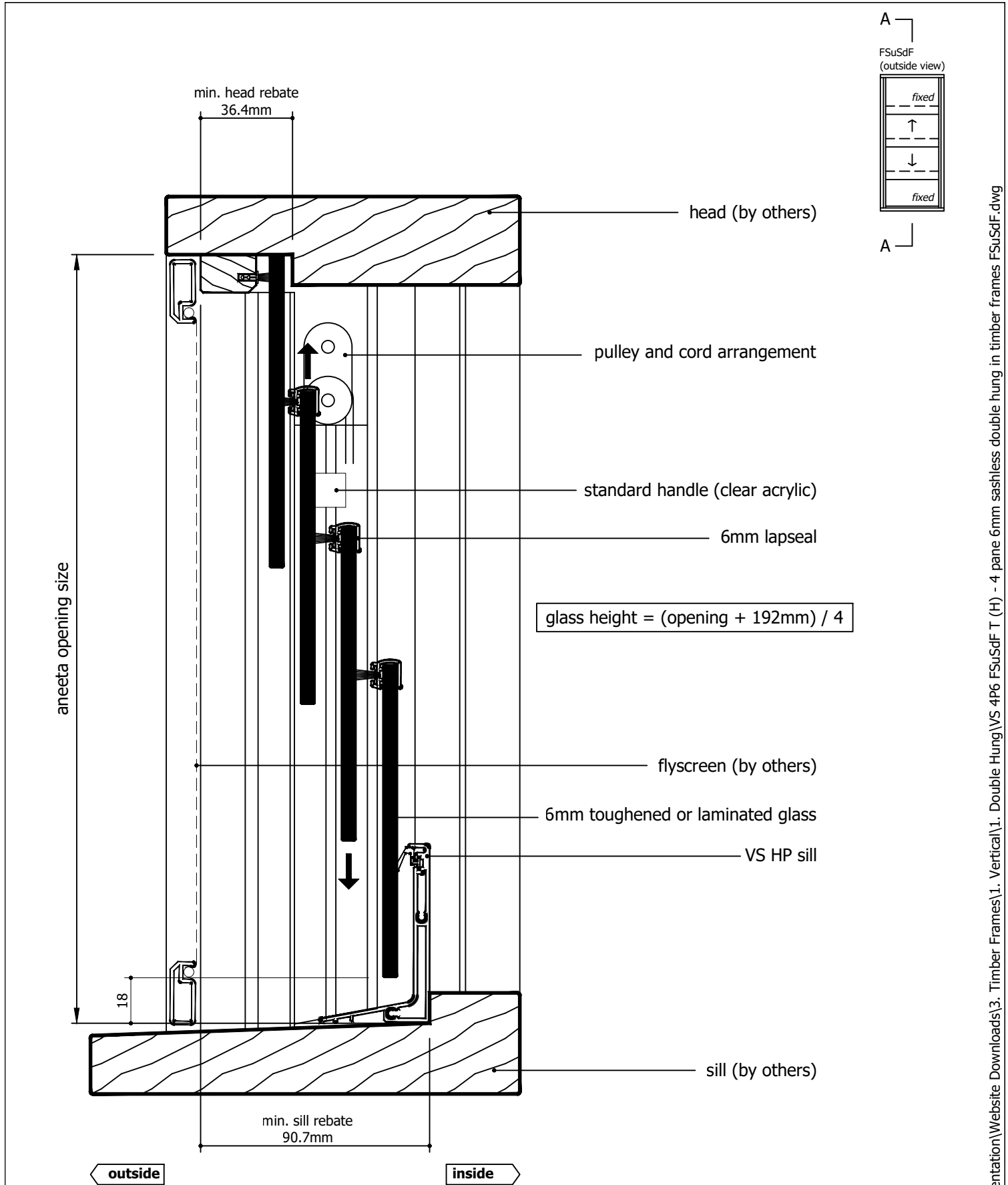
M:\Documentation\Website Downloads\3. Timber Frames\1. Vertical\1. Double Hung\VS 4P6 FSuSdF T (H) - 4 pane 6mm sashless double hung in timber frames FSuSdF.dwg




Rev	Description	Approved	
		By	Date
H	Delete P008 and replace with P229 - VS Sill	DF	26/8/2025
G	VS 300Pa/800Pa sill adaptor changed to VS Sill/VS HP Sill	DF	Oct2024
F	Add various sill options	SE	Jun2024
E	Update with new template, delete continuous handle	SE	Jan2024
D	New lock and pins	SE	Sep2020
C	Updated sill, lock, pulley height, drawing layout	RL	Jun2013
B	Adjusted glass heights	UF	Nov2010

<p>Proprietary and confidential</p> <p>The information contained in this drawing is the sole property of Aneeta Australia. Any reproduction in part or as a whole, without the written permission of Aneeta Australia is prohibited.</p>	Title: 4 pane 6mm sashless double hung in timber frames FSuSdF with aluminium covers outside, timber covers inside, and VS sill vertical section A-A	 <p>949 Stud Road, Rowville VIC 3178, ABN 80 062 883 729</p>	Material: in Timber frames	
			Finish: -	
Drwn: UF		Chk: -	Die/Part: -	
Date: Jan2010		Scale: 1:2@A4	Dwg No: VS 4P6 FSuSdF T	
Sheet 11 of 22		Revision: H		

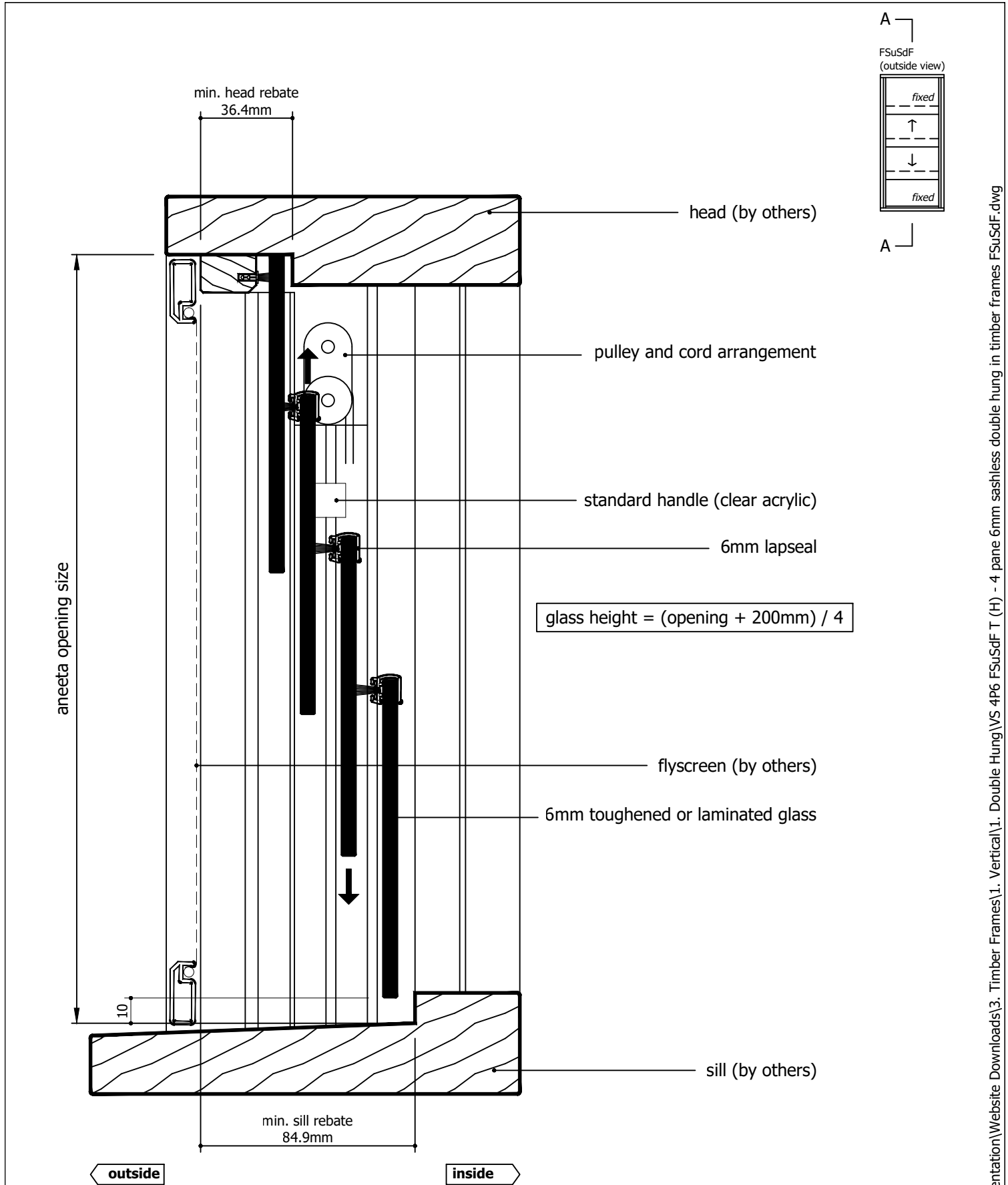
M:\Documentation\Website Downloads\3. Timber Frames\1. Vertical\1. Double Hung\VS 4P6 FSuSdF T (H) - 4 pane 6mm sashless double hung in timber frames FSuSdF.dwg



Rev	Description	Approved	
		By	Date
H	Delete P008 and replace with P229 - VS Sill	DF	26/8/2025
G	VS 300Pa/800Pa sill adaptor changed to VS Sill/VS HP Sill	DF	Oct2024
F	Add various sill options	SE	Jun2024
E	Update with new template, delete continuous handle	SE	Jan2024
D	New lock and pins	SE	Sep2020
C	Updated sill, lock, pulley height, drawing layout	RL	Jun2013
B	Adjusted glass heights	UF	Nov2010

Proprietary and confidential The information contained in this drawing is the sole property of Aneeta Australia. Any reproduction in part or as a whole, without the written permission of Aneeta Australia is prohibited.		Title: 4 pane 6mm sashless double hung in timber frames FSuSdF with aluminium covers outside, timber covers inside, and VS HP sill vertical section A-A		 949 Stud Road, Rowville VIC 3178, ABN 80 062 883 729		Material: in Timber frames	
						Finish: -	
						Die/Part: -	
						Dwg No: VS 4P6 FSuSdF T	
Drwn: UF		Chk: -	Date: Jan2010	Scale: 1:20A4	Sheet 12 of 22	Revision: H	

M:\Documentation\Website Downloads\3. Timber Frames\1. Vertical\1. Double Hung\VS 4P6 FSuSdF T (H) - 4 pane 6mm sashless double hung in timber frames FSuSdF.dwg



Rev	Description	Approved	
		By	Date
H	Delete P008 and replace with P229 - VS Sill	DF	26/8/2025
G	VS 300Pa/800Pa sill adaptor changed to VS Sill/VS HP Sill	DF	Oct2024
F	Add various sill options	SE	Jun2024
E	Update with new template, delete continuous handle	SE	Jan2024
D	New lock and pins	SE	Sep2020
C	Updated sill, lock, pulley height, drawing layout	RL	Jun2013
B	Adjusted glass heights	UF	Nov2010

Proprietary and confidential
The information contained in this drawing is the sole property of Aneeta Australia. Any reproduction in part or as a whole, without the written permission of Aneeta Australia is prohibited.


Title:
4 pane 6mm sashless double hung in timber frames FSuSdF with aluminium covers outside, timber covers inside, and no sill adaptor vertical section A-A

Drwn: UF

Chk: -

Date: Jan2010

Scale: 1:20A4



949 Stud Road, Rowville VIC 3178, ABN 80 062 883 729

Material: in Timber frames

Finish: -

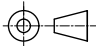
Die/Part: -

Dwg No: VS 4P6 FSuSdF T

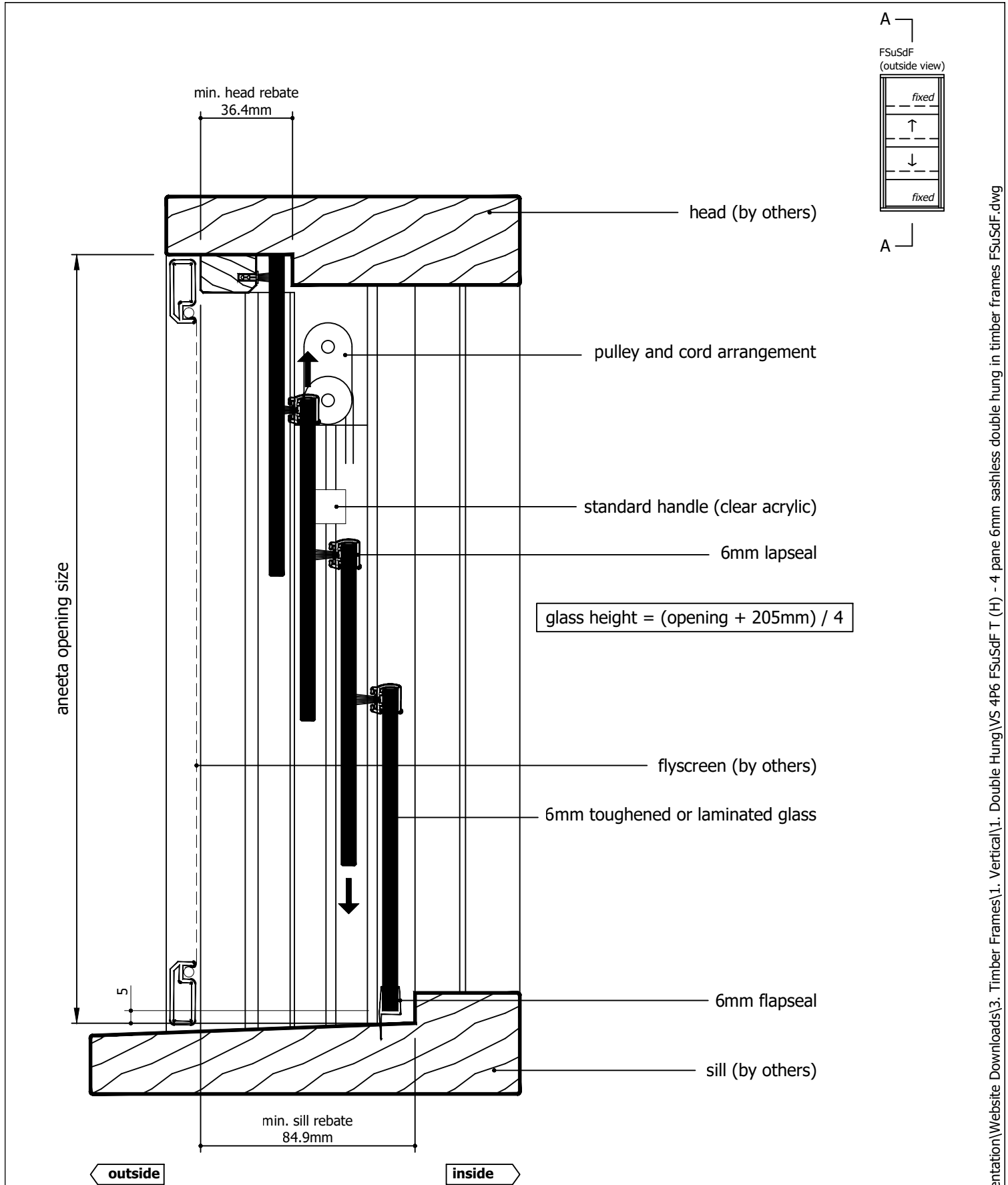
Sheet 13 of 22

Revision: H

IF IN DOUBT ASK - DO NOT SCALE DRAWING



M:\Documentation\Website Downloads\3. Timber Frames\1. Vertical\1. Double Hung\VS 4P6 FSuSdF T (H) - 4 pane 6mm sashless double hung in timber frames FSuSdF.dwg



Rev	Description	Approved	
		By	Date
H	Delete P008 and replace with P229 - VS Sill	DF	26/8/2025
G	VS 300Pa/800Pa sill adaptor changed to VS Sill/VS HP Sill	DF	Oct2024
F	Add various sill options	SE	Jun2024
E	Update with new template, delete continuous handle	SE	Jan2024
D	New lock and pins	SE	Sep2020
C	Updated sill, lock, pulley height, drawing layout	RL	Jun2013
B	Adjusted glass heights	UF	Nov2010

<div>Proprietary and confidential</div> <div>The information contained in this drawing is the sole property of Aneeta Australia. Any reproduction in part or as a whole, without the written permission of Aneeta Australia is prohibited.</div>	<div>Title: 4 pane 6mm sashless double hung in timber frames FSuSdF with aluminium covers outside, timber covers inside, and 6mm flapseal at sill vertical section A-A</div> <div><div><div><div></div><div></div><div></div></div><div>aneeta®</div></div><div>949 Stud Road, Rowville VIC 3178, ABN 80 062 883 729</div></div>				Material: in Timber frames	
					Finish: -	
					Die/Part: -	
					Dwg No: VS 4P6 FSuSdF T	
					Drwn: UF	Chk: -

M:\Documentation\Website Downloads\3. Timber Frames\1. Vertical\1. Double Hung\VS 4P6 FSuSdF T (H) - 4 pane 6mm sashless double hung in timber frames FSuSdF.dwg

glass width = opening - 40mm

aneeta opening size

flyscreen (optional by others)

6mm combination tee

top pane

bottom pane

timber cover

6mm multipane tee

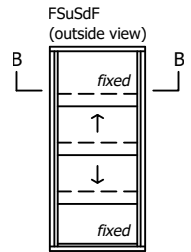
lock

jamb (by others)


outside

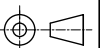
inside

86.9

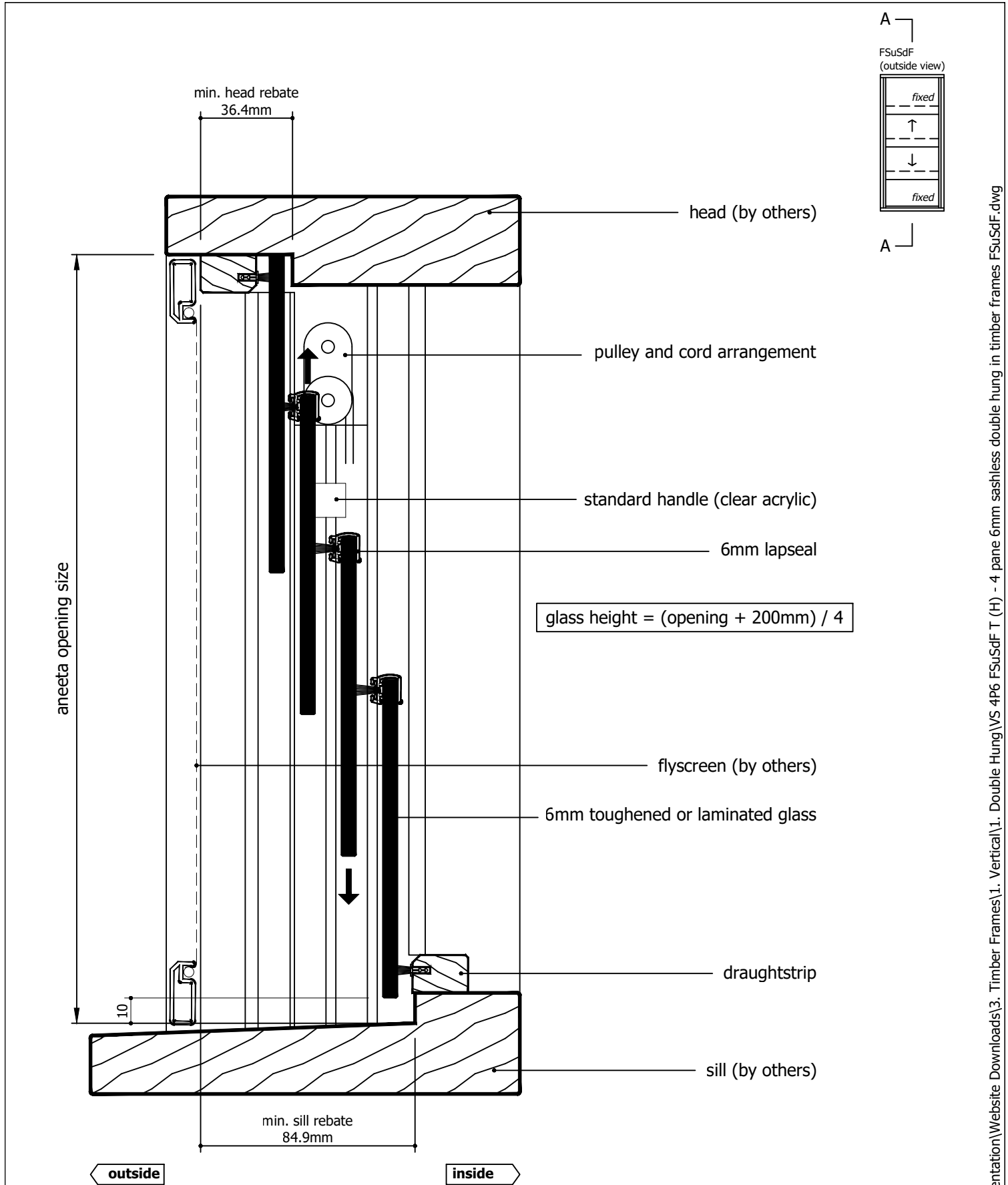


Rev	Description	Approved By	Date
H	Delete P008 and replace with P229 - VS Sill	DF	26/8/2025
G	VS 300Pa/800Pa sill adaptor changed to VS Sill/VS HP Sill	DF	Oct2024
F	Add various sill options	SE	Jun2024
E	Update with new template, delete continuous handle	SE	Jan2024
D	New lock and pins	SE	Sep2020
C	Updated sill, lock, pulley height, drawing layout	RL	Jun2013
B	Adjusted glass heights	UF	Nov2010

<div>Proprietary and confidential</div> <div>The information contained in this drawing is the sole property of Aneeta Australia. Any reproduction in part or as a whole, without the written permission of Aneeta Australia is prohibited.</div>	Title: 4 pane 6mm sashless double hung in timber frames FSuSdF with aluminium covers outside, timber covers inside horizontal section B-B				<div> 949 Stud Road, Rowville VIC 3178, ABN 80 062 883 729</div>		Material: in Timber frames
							Finish: -
							Die/Part: -
							Dwg No: VS 4P6 FSuSdF T
	Drwn: UF	Chk: -	Date: Jan2010	Scale: 1:1@A4	Sheet 15 of 22	Revision: H	




IF IN DOUBT ASK - DO NOT SCALE DRAWING



Rev	Description	Approved	
		By	Date
H	Delete P008 and replace with P229 - VS Sill	DF	26/8/2025
G	VS 300Pa/800Pa sill adaptor changed to VS Sill/VS HP Sill	DF	Oct2024
F	Add various sill options	SE	Jun2024
E	Update with new template, delete continuous handle	SE	Jan2024
D	New lock and pins	SE	Sep2020
C	Updated sill, lock, pulley height, drawing layout	RL	Jun2013
B	Adjusted glass heights	UF	Nov2010

Proprietary and confidential
The information contained in this drawing is the sole property of Aneeta Australia. Any reproduction in part or as a whole, without the written permission of Aneeta Australia is prohibited.

Title:
4 pane 6mm sashless double hung in timber frames FSuSdF with aluminium covers, and draughtstrips at sill vertical section A-A


949 Stud Road, Rowville VIC 3178, ABN 80 062 883 729

Drwn: UF Chk: - Date: Jan2010 Scale: 1:2@A4 Sheet 16 of 22 Revision: H

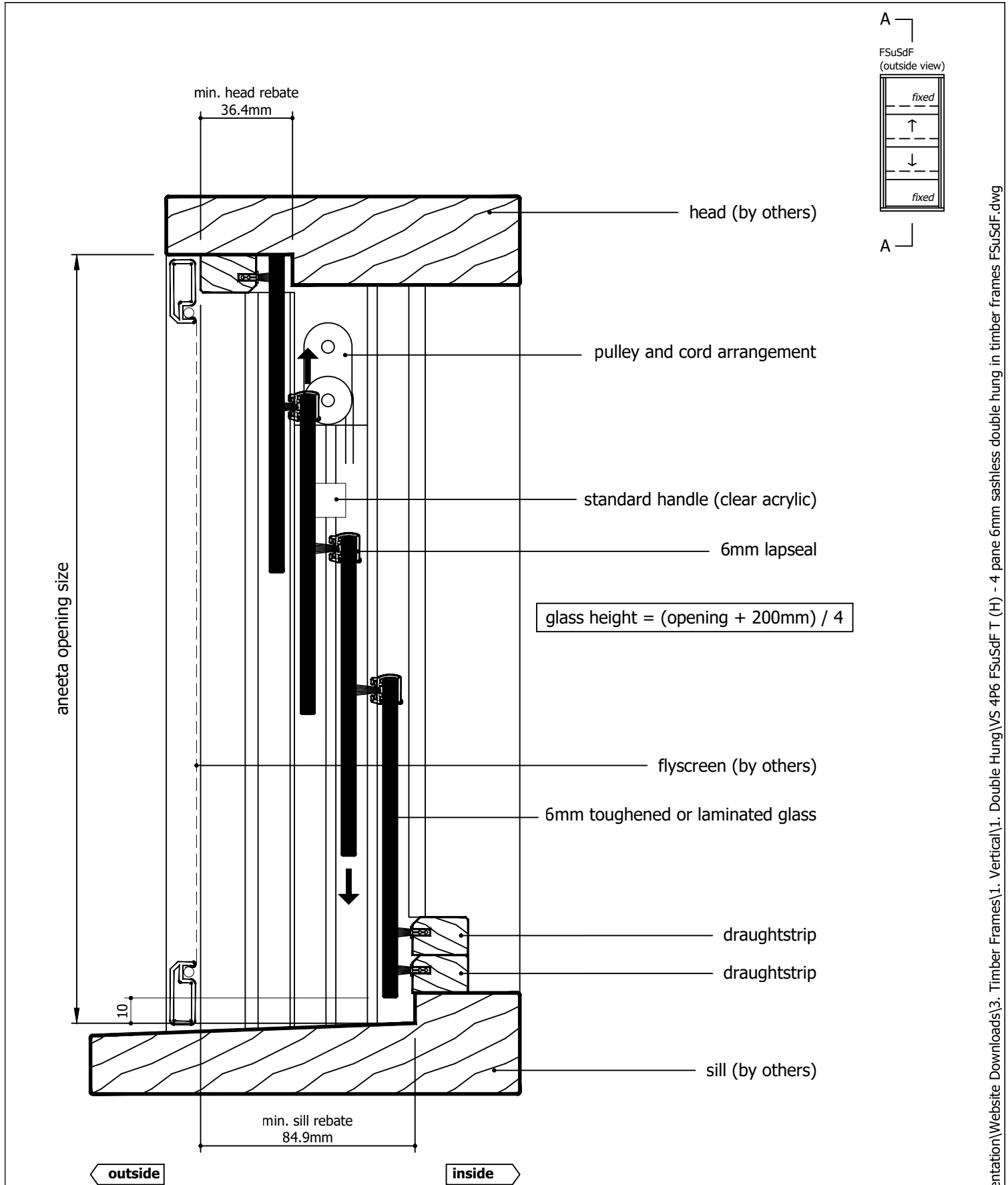
Material: in Timber frames

Finish: -

Die/Part: -

Dwg No: VS 4P6 FSuSdF T

M:\Documentation\Website Downloads\3. Timber Frames\1. Vertical\1. Double Hung\VS 4P6 FSuSdF T (H) - 4 pane 6mm sashless double hung in timber frames FSuSdF.dwg



Rev	Description	Approved	
		By	Date
H	Delete P008 and replace with P229 - VS Sill	DF	26/8/2025
G	VS 300Pa/800Pa sill adaptor changed to VS Sill/VS HP Sill	DF	Oct2024
F	Add various sill options	SE	Jun2024
E	Update with new template, delete continuous handle	SE	Jan2024
D	New lock and pins	SE	Sep2020
C	Updated sill, lock, pulley height, drawing layout	RL	Jun2013
B	Adjusted glass heights	UF	Nov2010

Proprietary and confidential
The information contained in this drawing is the sole property of Aneeta Australia. Any reproduction in part or as a whole, without the written permission of Aneeta Australia is prohibited.

Title:
4 pane 6mm sashless double hung in timber frames FSuSdF with aluminium covers, and 2 x draughtstrips at sill vertical section A-A

aneeta

949 Stud Road, Rowville VIC 3178, ABN 80 062 883 729

Material: in Timber frames

Finish: -

Die/Part: -

Dwg No: VS 4P6 FSuSdF T

Drwn: UF

Chk: -

Date: Jan2010

Scale: 1:20A4

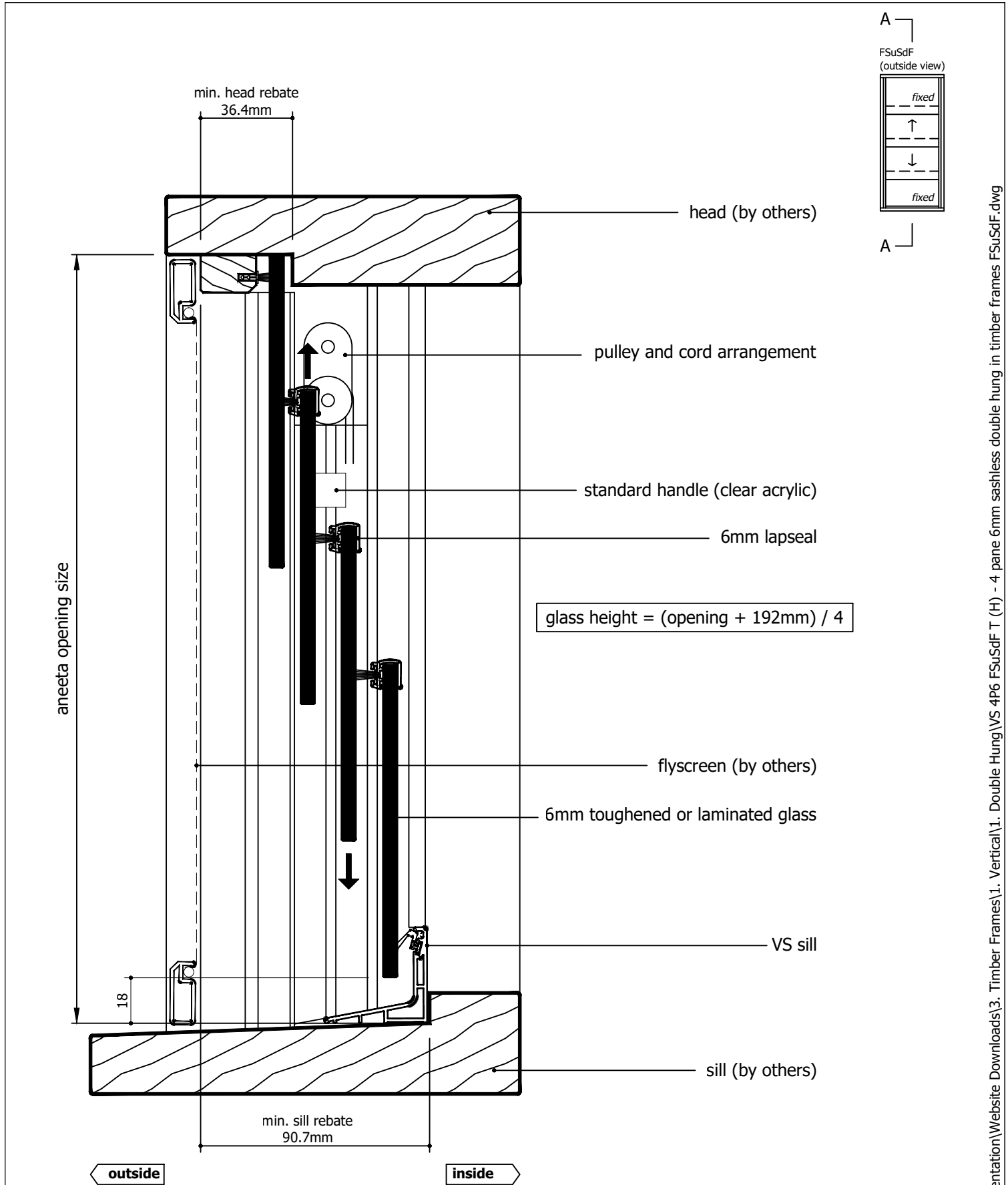
Sheet 17 of 22

Revision: H

IF IN DOUBT ASK -

DO NOT SCALE DRAWING


M:\Documentation\Website Downloads\3. Timber Frames\1. Vertical\1. Double Hung\VS 4P6 FSuSdF T (H) - 4 pane 6mm sashless double hung in timber frames FSuSdF.dwg



Rev	Description	Approved	
		By	Date
H	Delete P008 and replace with P229 - VS Sill	DF	26/8/2025
G	VS 300Pa/800Pa sill adaptor changed to VS Sill/VS HP Sill	DF	Oct2024
F	Add various sill options	SE	Jun2024
E	Update with new template, delete continuous handle	SE	Jan2024
D	New lock and pins	SE	Sep2020
C	Updated sill, lock, pulley height, drawing layout	RL	Jun2013
B	Adjusted glass heights	UF	Nov2010

Proprietary and confidential
The information contained in this drawing is the sole property of Aneeta Australia. Any reproduction in part or as a whole, without the written permission of Aneeta Australia is prohibited.

Title:
4 pane 6mm sashless double hung in timber frames FSuSdF with aluminium covers, and VS sill vertical section A-A


949 Stud Road, Rowville VIC 3178, ABN 80 062 883 729

Drwn: UF Chk: - Date: Jan2010 Scale: 1:2@A4 Sheet 18 of 22 Revision: H

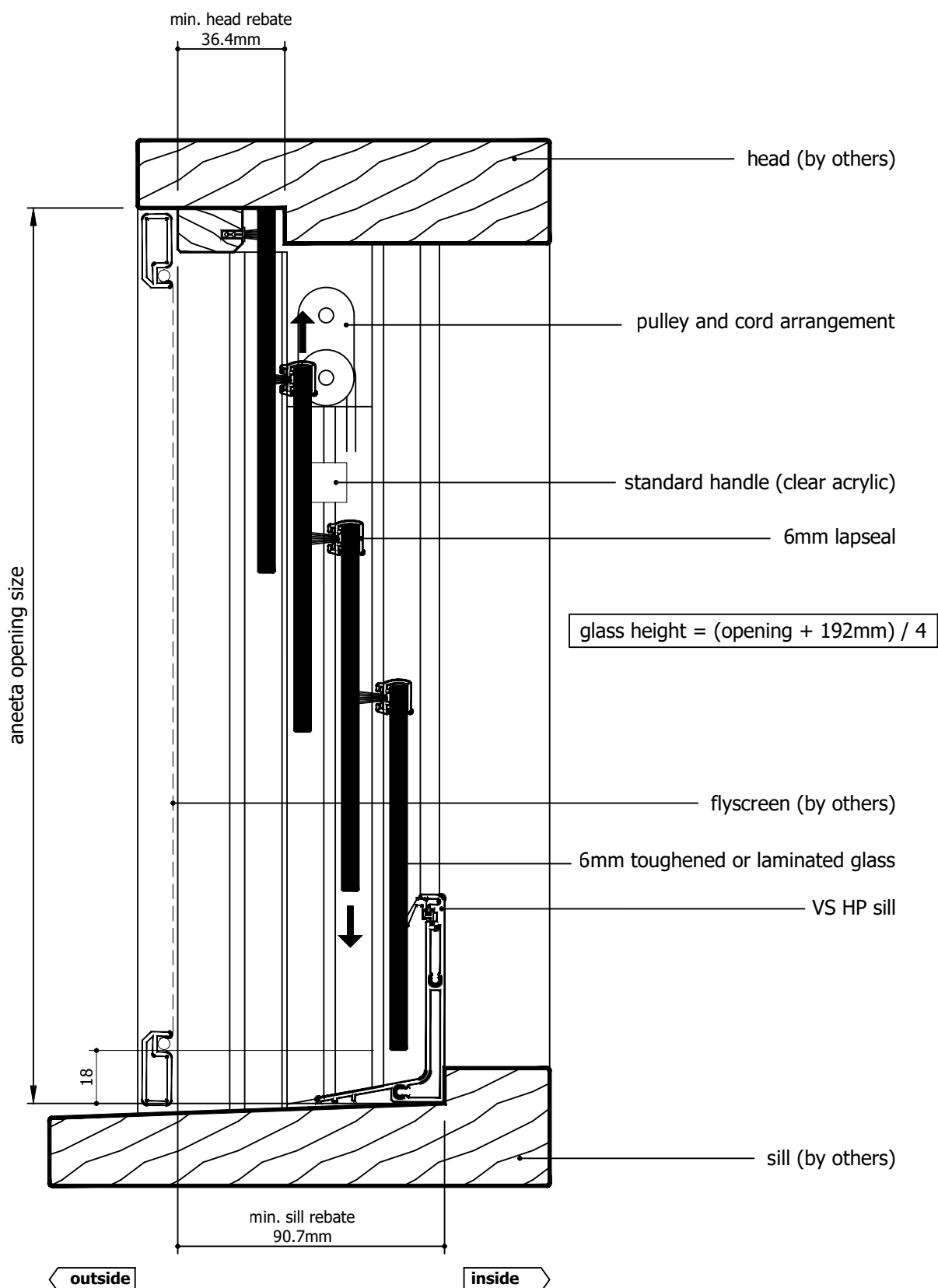
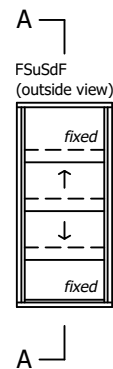
Material: in Timber frames

Finish: -


Die/Part: -

Dwg No: VS 4P6 FSuSdF T

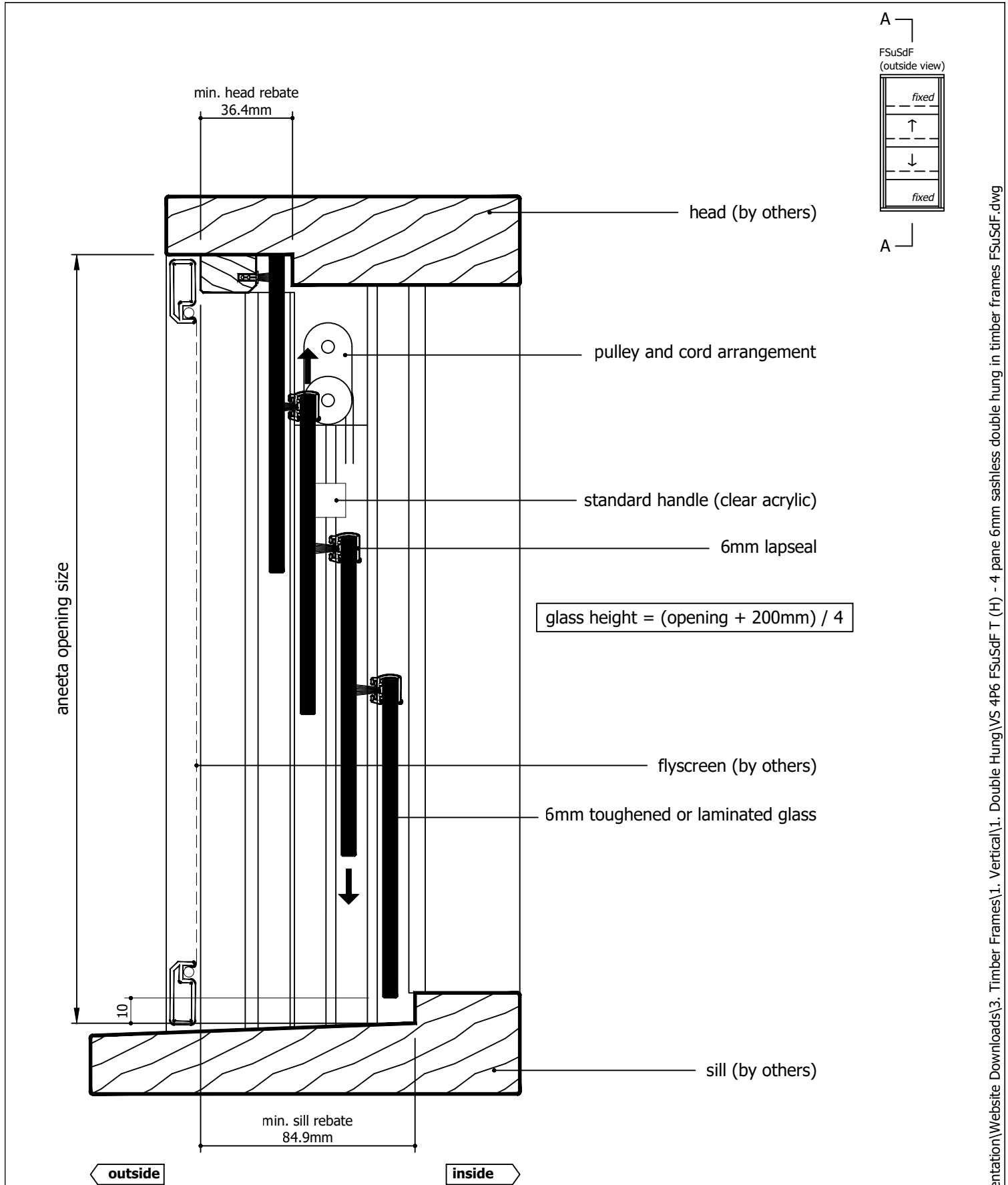
M:\Documentation\Website Downloads\3. Timber Frames\1. Vertical\1. Double Hung\VS 4P6 FSuSdF T (H) - 4 pane 6mm sashless double hung in timber frames FSuSdF.dwg



Rev	Description	Approved By	Date
H	Delete P008 and replace with P229 - VS Sill	DF	26/8/2025
G	VS 300Pa/800Pa sill adaptor changed to VS Sill/VS HP Sill	DF	Oct2024
F	Add various sill options	SE	Jun2024
E	Update with new template, delete continuous handle	SE	Jan2024
D	New lock and pins	SE	Sep2020
C	Updated sill, lock, pulley height, drawing layout	RL	Jun2013
B	Adjusted glass heights	UF	Nov2010

<div>Proprietary and confidential</div> <div>The information contained in this drawing is the sole property of Aneeta Australia. Any reproduction in part or as a whole, without the written permission of Aneeta Australia is prohibited.</div>	Title: 4 pane 6mm sashless double hung in timber frames FSuSdF with aluminium covers, and VS HP sill vertical section A-A				<div> 949 Stud Road, Rowville VIC 3178, ABN 80 062 883 729</div>		Material: in Timber frames
							Finish: -
							Die/Part: -
							Dwg No: VS 4P6 FSuSdF T
	Drwn: UF	Chk: -	Date: Jan2010	Scale: 1:2@A4	Sheet 19 of 22	Revision: H	


M:\Documentation\Website Downloads\3. Timber Frames\1. Vertical\1. Double Hung\VS 4P6 FSuSdF T (H) - 4 pane 6mm sashless double hung in timber frames FSuSdF.dwg



Rev	Description	Approved	
		By	Date
H	Delete P008 and replace with P229 - VS Sill	DF	26/8/2025
G	VS 300Pa/800Pa sill adaptor changed to VS Sill/VS HP Sill	DF	Oct2024
F	Add various sill options	SE	Jun2024
E	Update with new template, delete continuous handle	SE	Jan2024
D	New lock and pins	SE	Sep2020
C	Updated sill, lock, pulley height, drawing layout	RL	Jun2013
B	Adjusted glass heights	UF	Nov2010

Proprietary and confidential
The information contained in this drawing is the sole property of Aneeta Australia. Any reproduction in part or as a whole, without the written permission of Aneeta Australia is prohibited.

Title:
4 pane 6mm sashless double hung in timber frames FSuSdF with aluminium covers, and no sill adaptor vertical section A-A


949 Stud Road, Rowville VIC 3178, ABN 80 062 883 729

Drwn: UF Chk: - Date: Jan2010 Scale: 1:20A4 Sheet 20 of 22 Revision: H

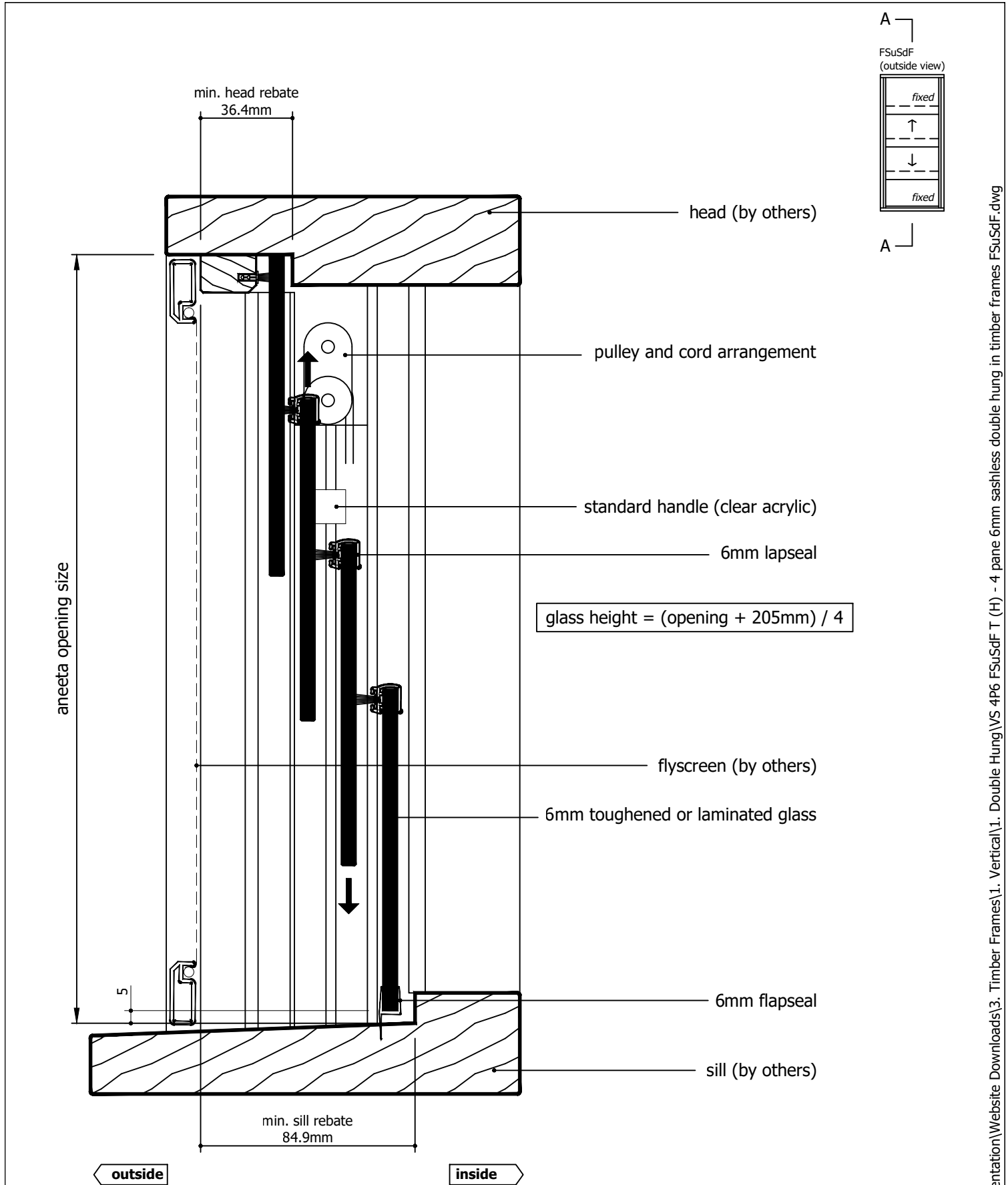
Material: in Timber frames

Finish: -

Die/Part: -

Dwg No: VS 4P6 FSuSdF T


M:\Documentation\Website Downloads\3. Timber Frames\1. Vertical\1. Double Hung\VS 4P6 FSuSdF T (H) - 4 pane 6mm sashless double hung in timber frames FSuSdF.dwg



Rev	Description	Approved	
		By	Date
H	Delete P008 and replace with P229 - VS Sill	DF	26/8/2025
G	VS 300Pa/800Pa sill adaptor changed to VS Sill/VS HP Sill	DF	Oct2024
F	Add various sill options	SE	Jun2024
E	Update with new template, delete continuous handle	SE	Jan2024
D	New lock and pins	SE	Sep2020
C	Updated sill, lock, pulley height, drawing layout	RL	Jun2013
B	Adjusted glass heights	UF	Nov2010

Proprietary and confidential
The information contained in this drawing is the sole property of Aneeta Australia. Any reproduction in part or as a whole, without the written permission of Aneeta Australia is prohibited.

Title:
4 pane 6mm sashless double hung in timber frames FSuSdF with aluminium covers, and 6mm flapseal at sill vertical section A-A


949 Stud Road, Rowville VIC 3178, ABN 80 062 883 729

Drwn: UF Chk: - Date: Jan2010 Scale: 1:2@A4 Sheet 21 of 22 Revision: H

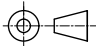
Material: in Timber frames

Finish: -

Die/Part: -

Dwg No: VS 4P6 FSuSdF T

IF IN DOUBT ASK - DO NOT SCALE DRAWING



M:\Documentation\Website Downloads\3. Timber Frames\1. Vertical\1. Double Hung\VS 4P6 FSuSdF T (H) - 4 pane 6mm sashless double hung in timber frames FSuSdF.dwg

glass width = opening - 40mm

aneeta opening size

flyscreen (optional by others)

6mm combination tee

top pane

bottom pane

aluminium cover

6mm multipane tee

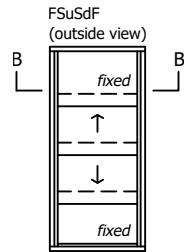
lock

jamb (by others)


outside

inside

71.3



Rev	Description	Approved By	Date
H	Delete P008 and replace with P229 - VS Sill	DF	26/8/2025
G	VS 300Pa/800Pa sill adaptor changed to VS Sill/VS HP Sill	DF	Oct2024
F	Add various sill options	SE	Jun2024
E	Update with new template, delete continuous handle	SE	Jan2024
D	New lock and pins	SE	Sep2020
C	Updated sill, lock, pulley height, drawing layout	RL	Jun2013
B	Adjusted glass heights	UF	Nov2010

<div>Proprietary and confidential</div> <div>The information contained in this drawing is the sole property of Aneeta Australia. Any reproduction in part or as a whole, without the written permission of Aneeta Australia is prohibited.</div>	Title: 4 pane 6mm sashless double hung in timber frames FSuSdF with aluminium covers,				<div> 949 Stud Road, Rowville VIC 3178, ABN 80 062 883 729</div>		Material: in Timber frames
	horizontal section B-B						Finish: -
	Drwn: UF	Chk: -	Date: Jan2010	Scale: 1:1@A4	Sheet 22 of 22	Revision: H	Die/Part: -
						Dwg No: VS 4P6 FSuSdF T	

M:\Documentation\Website Downloads\3. Timber Frames\1. Vertical\1. Double Hung\VS 4P6 FSuSdF T (H) - 4 pane 6mm sashless double hung in timber frames FSuSdF.dwg